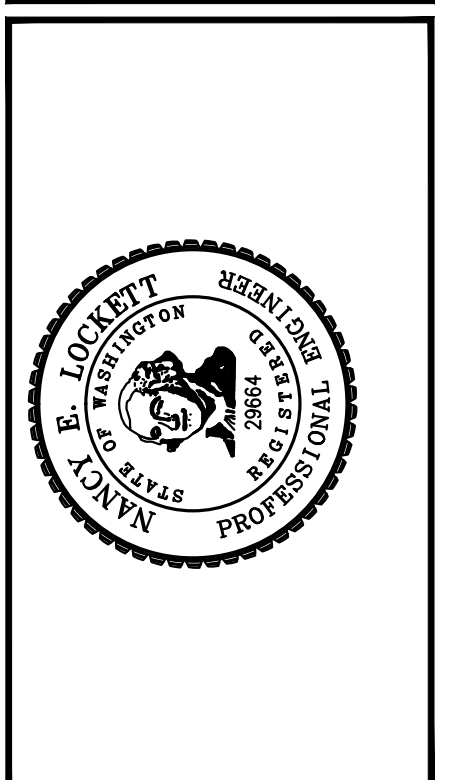
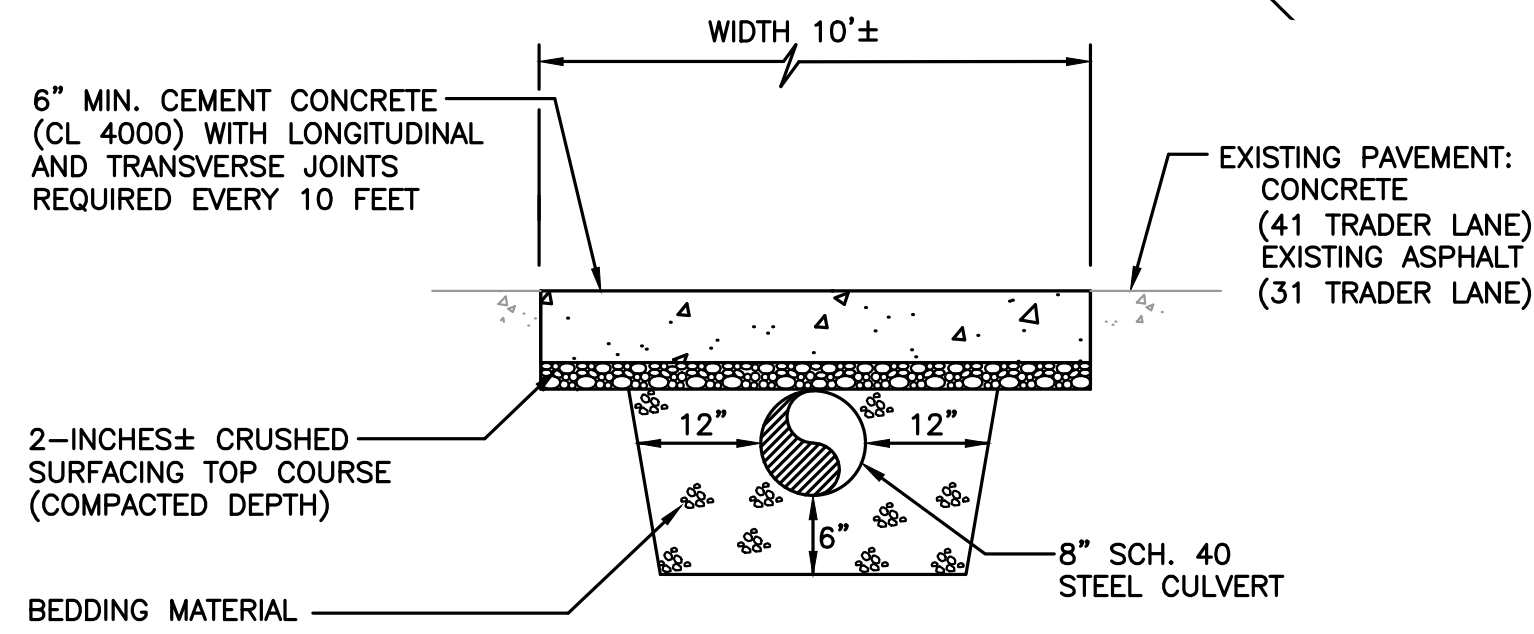
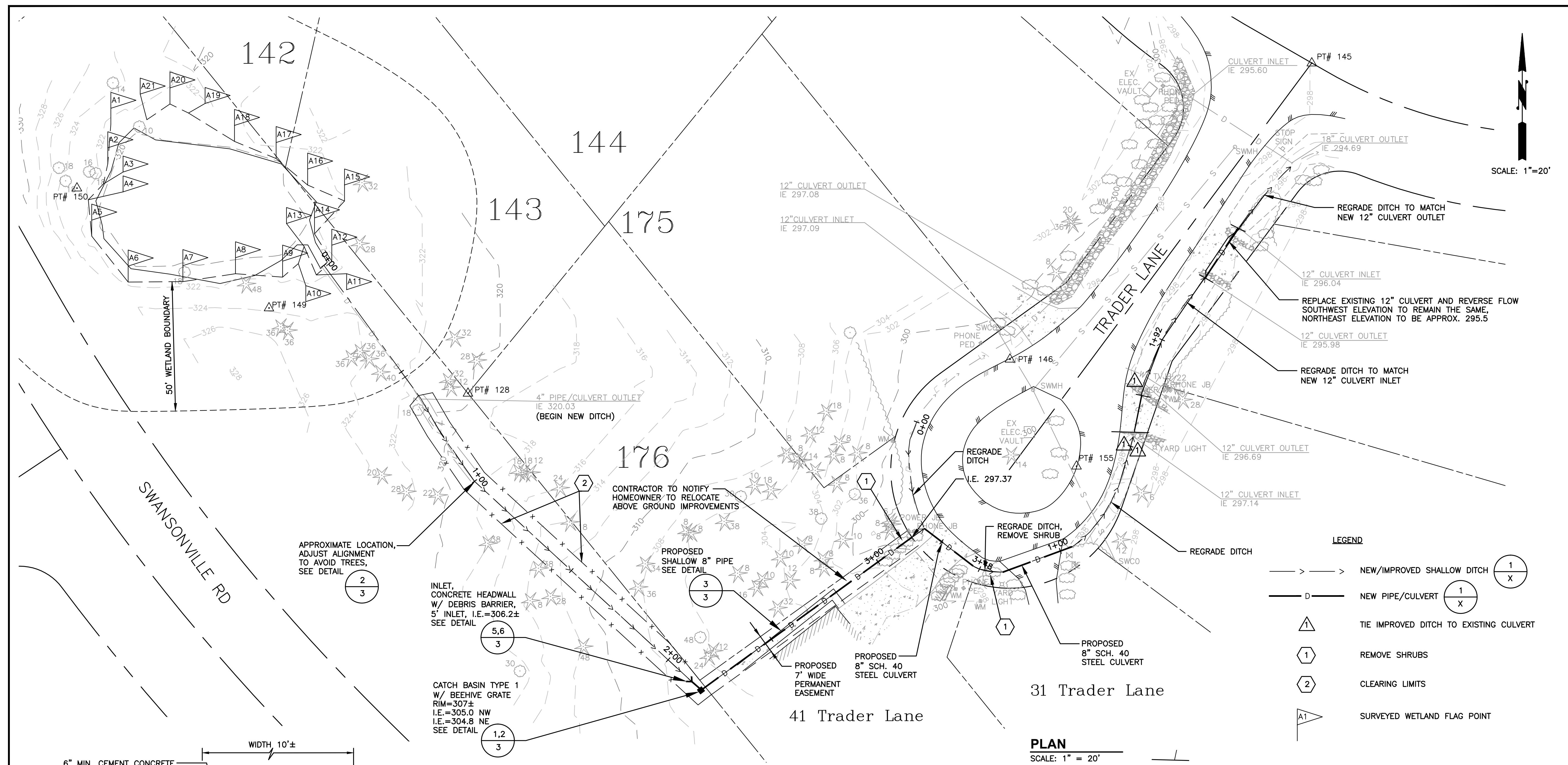


DATE: JAN 2015	SCALE: 1"=20'	DRAWN: P.C.M.	CHECKED: N.E.L.	APPROVED: N.E.L.
----------------	---------------	---------------	-----------------	------------------

No.	REVISION	DATE	APPD

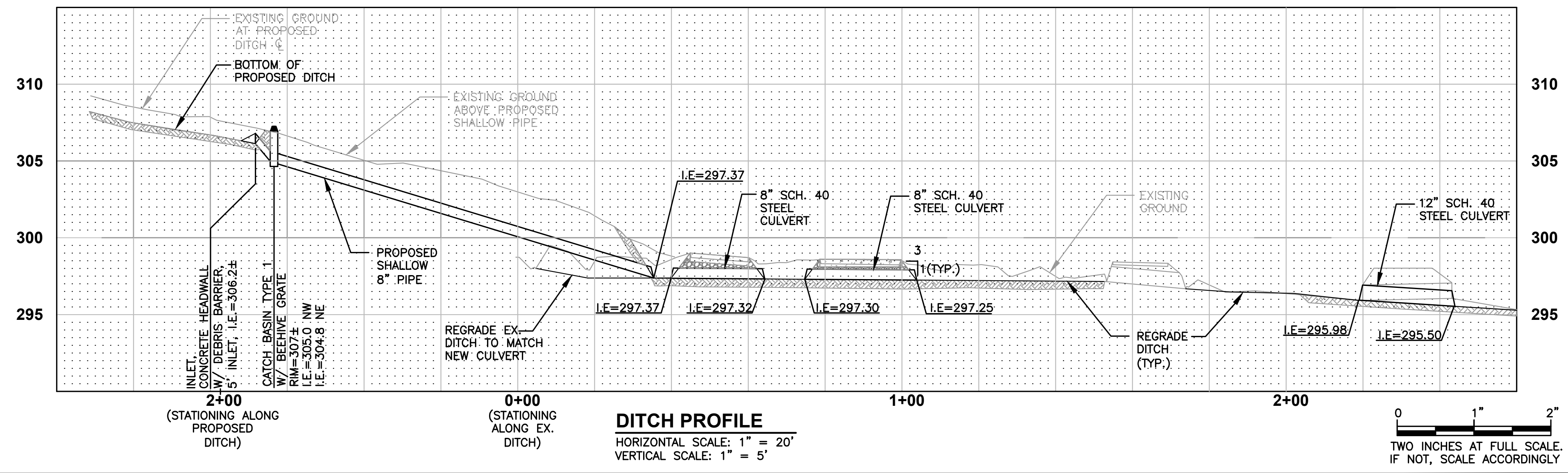


PORT LUDLOW DRAINAGE DISTRICT  
 JEFFERSON COUNTY WASHINGTON  
**TRADER LANE  
 DRAINAGE IMPROVEMENT PROJECT**  
 EXISTING SITE PLAN



- NOTES:**
- CONCRETE CAST IN PLACE.
  - BEDDING COMPACTED TO 95% MAX AS DETERMINED BY ASTM D1857.
  - PIPE SHALL BE SCH. 40 STEEL - 8-INCH DIAMETER.
  - HYDROSEED RESHAPED DITCH.
  - CONTRACTOR TO MATCH COLOR AND TEXTURE OF EXISTING DRIVEWAY.  
 GRAY - 41 TRADER LANE  
 BLACK - 31 TRADER LANE

**1 CEMENT CONCRETE DRIVEWAY REPAIR**  
 NOT TO SCALE



**2 TWO INCHES AT FULL SCALE. IF NOT, SCALE ACCORDINGLY**